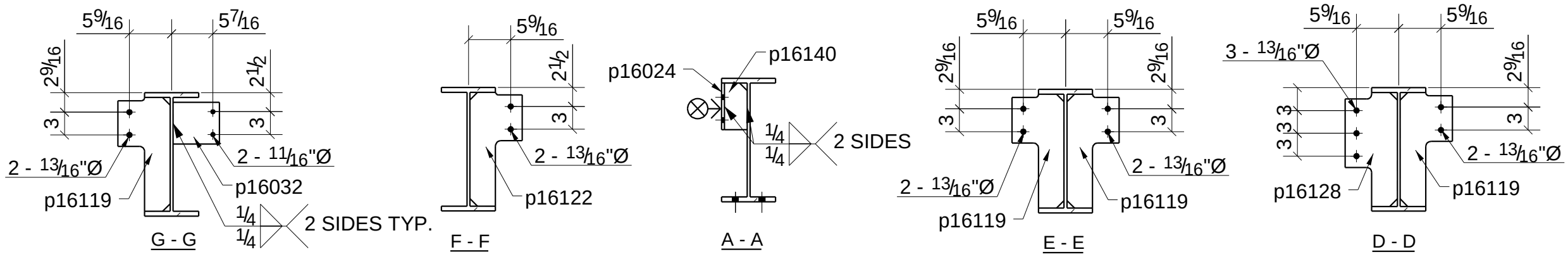
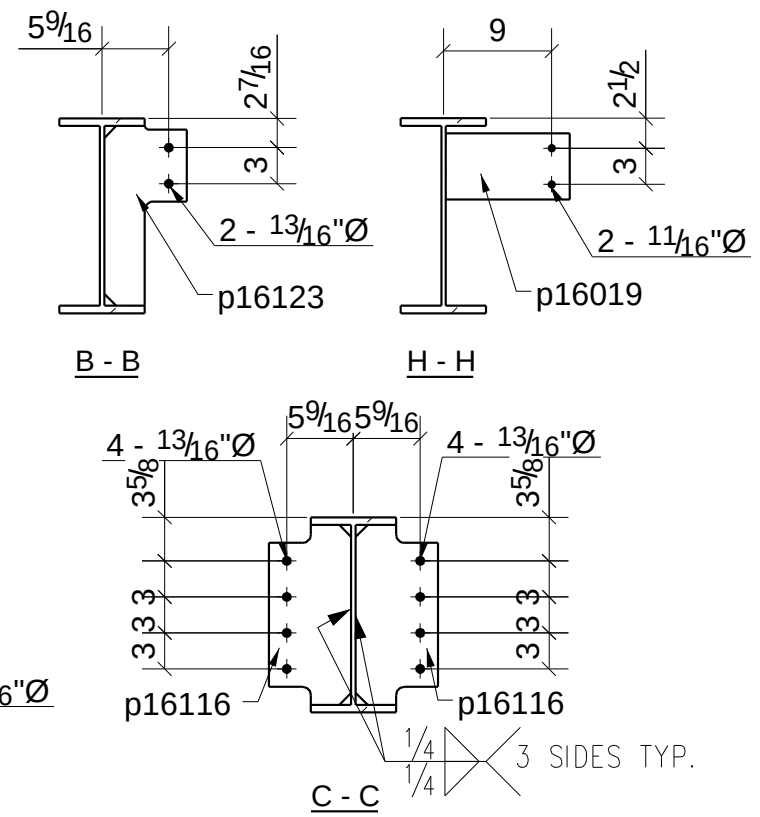


BILL OF MATERIAL								
ABM MARK	MARK	QTY	MATERIAL	LENGTH		TOTAL WEIGHT	GRADE	REMARKS
				FT.	IN.			
B16030		1	W16X50	29'-9"		1488	A992	
p16019		2	PL3/8"X5 1/2"	0'-10 5/16"		12.1	A36	
p16024		1	PL3/8"X4"	0'-6 1/8"		2.6	A36	
p16032		1	PL3/8"X5 1/2"	0'-6 1/8"		3.6	A36	
p16116		12	PL5/8"X6 7/8"	1'-3"		195.3	A36	
p16119		4	PL5/8"X6 7/8"	1'-3"		50.2	A36	
p16122		1	PL5/8"X6 7/8"	1'-3"		12.5	A36	
p16123		1	PL5/8"X6 7/8"	1'-3"		12.5	A36	
p16128		1	PL5/8"X6 7/8"	1'-3"		14.4	A36	
p16140		1	PL3/8"X3"	0'-6 1/8"		1.9	A36	
TOTAL WEIGHT						1792		

B16030 BOLT QTY'S ARE FOR ONE ASSEMBLY ONLY



ONE BEAM REQ'D AS DRAWN MK B16030

GRID LOCATION  
1/A-C

- GENERAL NOTES:
- 1) ALL MATERIAL = A36 (UN)
  - 2) ALL HSS MATERIAL = A500-B (UN)
  - 3) DEBURR ALL HOLES
  - 4) NO PAINT 3" AROUND OPEN HOLES MARKED "SC"

PRINT			RECORD		
DATE	NO. PRTS	FOR	DATE	NO. PRTS	FOR

E-DWG. REF.: E16002

BOLTS: 3/4" DIA. A325N

OPEN HOLES: 13/16" DIA.

PAINT: PS1

CLEAN: PS1

UNLESS NOTED